



*Cipriani Harrison Valves Corp.*

## Sight Glass 95 Series

### Application

Inline sight glasses are used in pipelines for visual observation of product flow.

### Working Principle

Once the sight glass is installed inline product will flow through the inside of the unit allowing for easy visual examination of liquid flow.

### Standard Design

The food grade polycarbonate tube is as clear as glass and it is unbreakable under normal use. It is mounted under two forged stainless steel flanges by means of stainless steel studs and nuts. The forged stainless steel flanges ensure non porous, smooth surface and dimensionally stable construction.

### Available Sizes

1", 1½", 2", 2½", 3", 4"

### Options

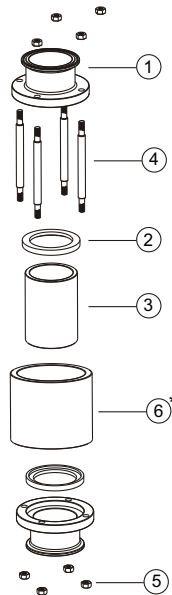
End connections: Sanitary Clamp, Butt-Weld, I-Line or others on request.

Guard : The outer polycarbonate guard protects the inner glass from being broken or damaged.

**Material :** AISI 316L or AISI 304L

### FDA Seal Material

Standard : PTFE  
Optional : Silicone



Exploded view of standard Sight Glass

NO.	PART NO.	DESCRIPTION	MATERIAL
1	9501	FLANGE	AISI 316L / AISI 304L
2	9502	GASKET	PTFE
3	9503	TUBE	POLYCARBONATE (LEXAN)
4	9504	STUD	AISI 304
5	9505	NYLOCK NUT	AISI 304 / NYLON
6*	9506	GUARD	POLYCARBONATE

\* Guard is not a standard accessory of 95 series Sight Glass. It is available upon request.



Standard Sight Glass

Guarded Sight Glass

 *Cipriani Harrison Valves Corp.*

30271 Tomas Street • Rancho Santa Margarita, CA 92688 • Tel. 949/589-3978 • Fax 949/589-3979  
Email : [cipriani@ciprianicorp.com](mailto:cipriani@ciprianicorp.com) • Website : <http://www.ciprianicorp.com/>

## Sight Glass

95 Series

### TECHNICAL SPECIFICATIONS :

#### Material :

Product wetted steel parts.....AISI 316L or AISI 304L  
Other steel parts.....AISI 304

#### FDA Seals :

Standard.....PTFE  
Optional.....SILICONE

#### Tube :

Standard..... Food grade polycarbonate (Lexan)  
Optional..... Borosilicate Glass  
Guard (Optional) ..... Polycarbonate

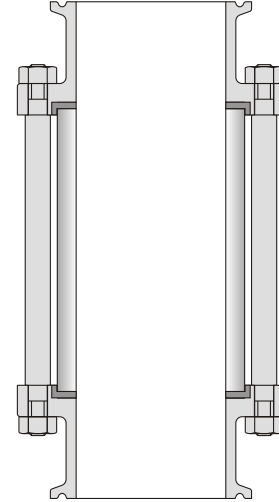
#### Nominal Pressure :

Maximum product pressure..... 10 bar maximum (145 PSI) (Lexan)  
10 bar maximum (145 PSI) (Borosilicate)  
Working temperature..... 215° Fahrenheit max. (Lexan)  
350° Fahrenheit max. (Borosilicate)

#### Surface Finish :

Surface in contact with product..Ra <math>\leq 25 \mu\text{in}</math> (Grit 220g)  
Optional.....Ra <math>\leq 15 \mu\text{in}</math> (Grit 320g)  
\*Electropolishing available upon request.

**Connections** ..... Sanitary Clamp (ISO 2852 / BS 4825)  
**Optional**..... Butt Weld (ISO 2037 / BS 4825)  
I-Line  
Other Connections on request

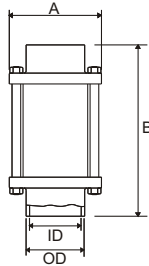


30271 Tomas Street • Rancho Santa Margarita, CA 92688 • Tel. 949/589-3978 • Fax 949/589-3979  
Email : [cipriani@ciprianicorp.com](mailto:cipriani@ciprianicorp.com) • Website : <http://www.ciprianicorp.com/>

# Sight Glass

95 Series

## TECHNICAL SPECIFICATIONS :

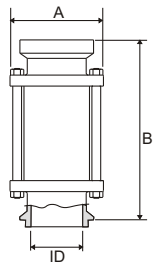
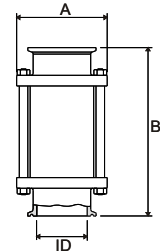


### Butt Weld

Dimensions	1"	1½"	2"	2 ½"	3"	4"
A	2 1/8	2 15/16	3 11/32	3 3/4	4 1/8	5 ½
B	6 17/32	6 17/32	6 17/32	6 17/32	6 17/32	6 17/32
ID	7/8	1 3/8	1 7/8	2 3/8	2 55/64	3 27/32
OD	1	1 ½	2	2 ½	3	4

### Sanitary Clamp

Dimensions	1"	1½"	2"	2 ½"	3"	4"
A	2 1/8	2 15/16	3 11/32	3 3/4	4 1/8	5 ½
B	6 17/32	6 17/32	6 17/32	6 17/32	6 17/32	6 17/32
ID	7/8	1 3/8	1 7/8	2 3/8	2 55/64	3 27/32



### I-Line

Dimensions	1"	1½"	2"	2 ½"	3"	4"
A	2 1/8	2 15/16	3 11/32	3 3/4	4 1/8	5 ½
B	6 17/32	6 17/32	6 17/32	6 17/32	6 17/32	6 17/32
ID	7/8	1 3/8	1 7/8	2 3/8	2 55/64	3 27/32

\* Consult the factory for I-line Male x Male or I-line Female x Female "B" Dimensions.

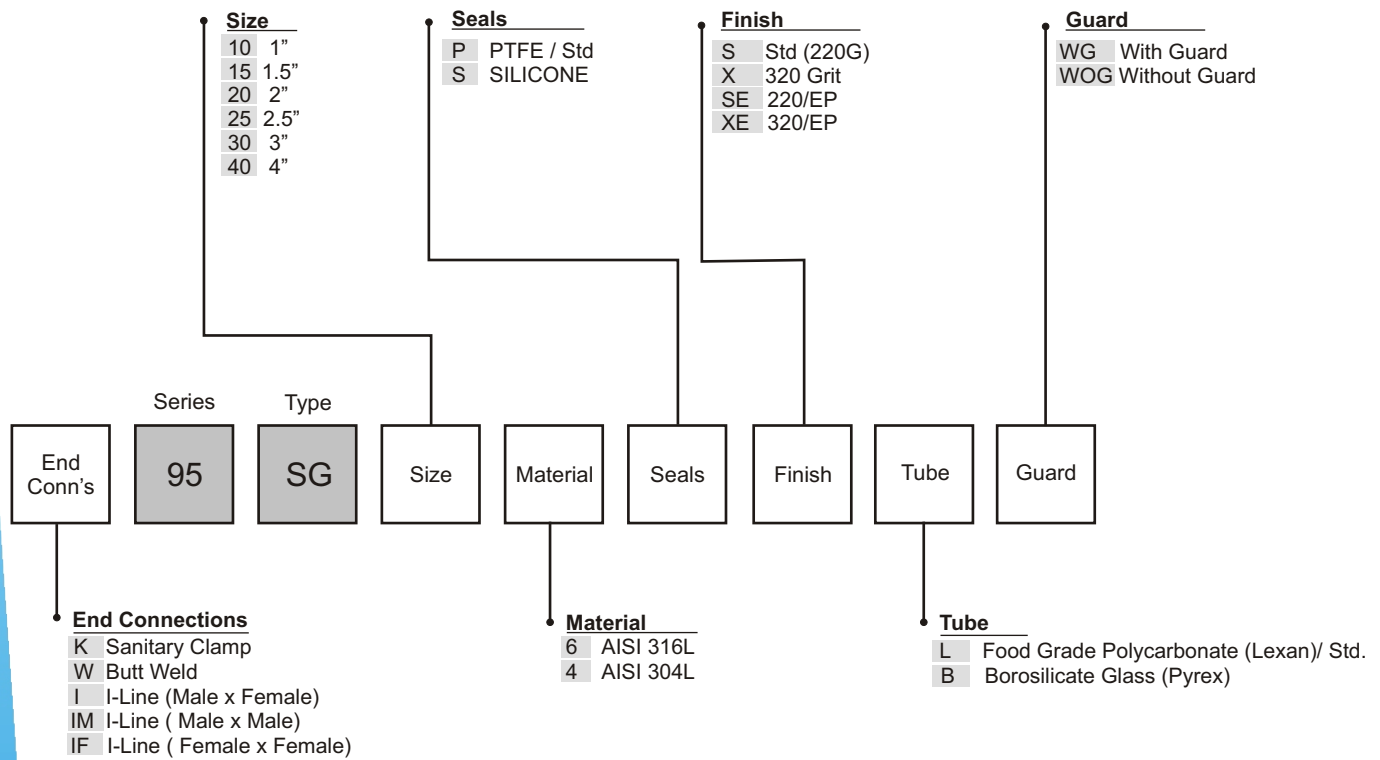
 **Cipriani Harrison Valves Corp.**

30271 Tomas Street • Rancho Santa Margarita, CA 92688 • Tel. 949/589-3978 • Fax 949/589-3979  
 Email : [cipriani@ciprianicorp.com](mailto:cipriani@ciprianicorp.com) • Website : <http://www.ciprianicorp.com/>

# Sight Glass

95 Series

## 95 Series Sight Glass Ordering System



 **Cipriani Harrison Valves Corp.**

30271 Tomas Street • Rancho Santa Margarita, CA 92688 • Tel. 949/589-3978 • Fax 949/589-3979  
 Email : cipriani@ciprianicorp.com • Website : <http://www.ciprianicorp.com/>