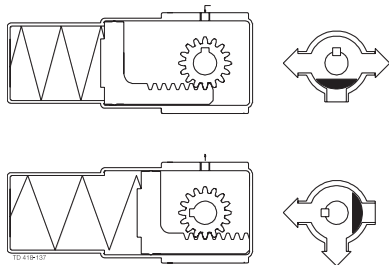


Actuator functions

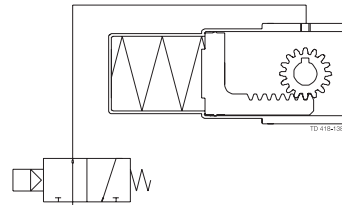
Actuator type 630:

- for 1" to 3" (25 mm to 76.1 mm) valves only
- two positions
- spring/air
- turning angle 1x90°

Sizes 1" to 2":

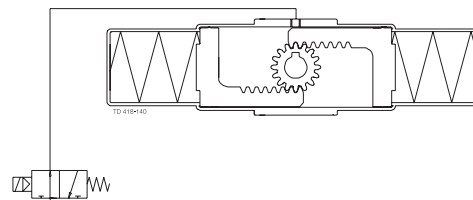
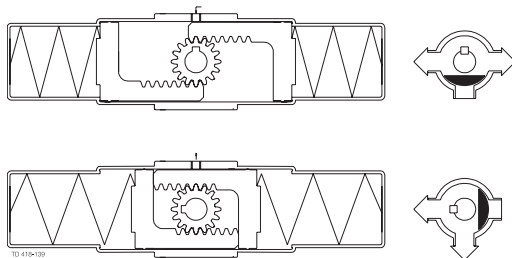


Pneumatic connections



Sizes 2½" - 3":

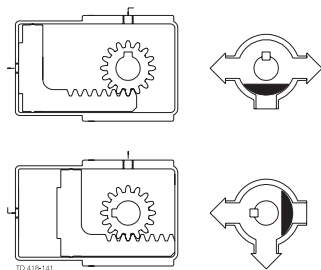
Double acting actuator



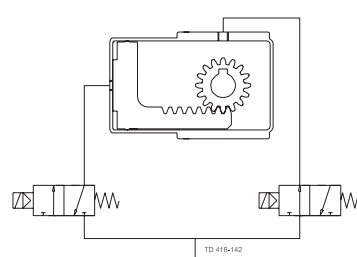
Actuator type 631:

- two positions
- air/air
- turning angle 1x180°

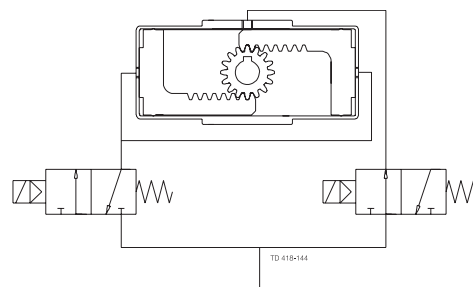
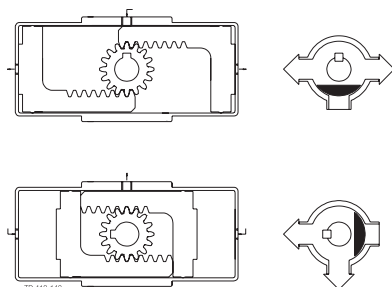
Sizes 1" to 3":



Pneumatic connections



Size 4": Double acting actuator

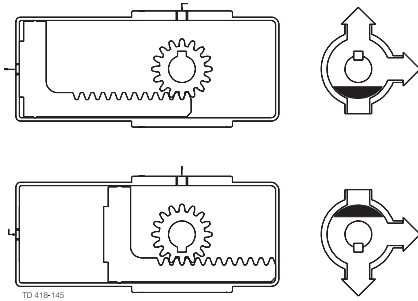


Actuator functions

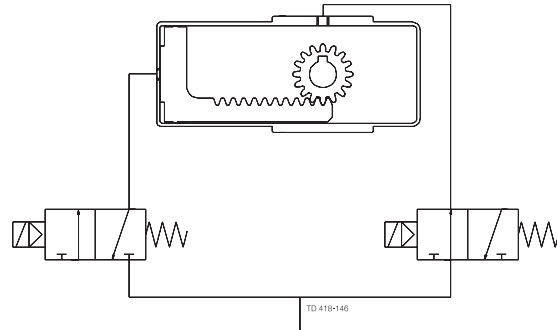
Actuator type 632:

- two positions
- air/air
- turning angle 1x180°

Sizes 1" to 3":



Pneumatic connections

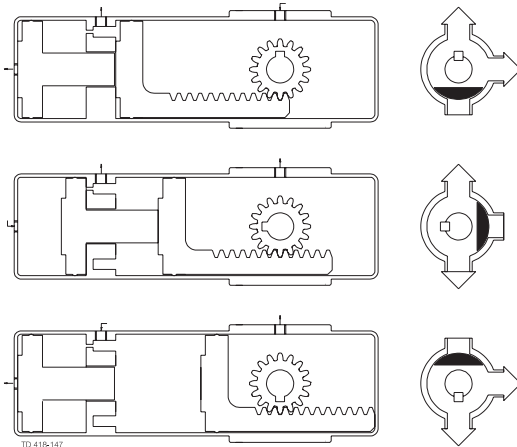


Size 4": Double acting actuator

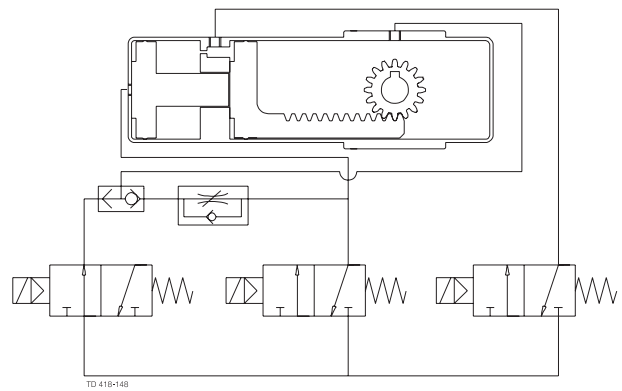
Actuator type 633:

- two positions
- air/air
- turning angles 2x90°

Sizes 1" to 3":



Pneumatic connections

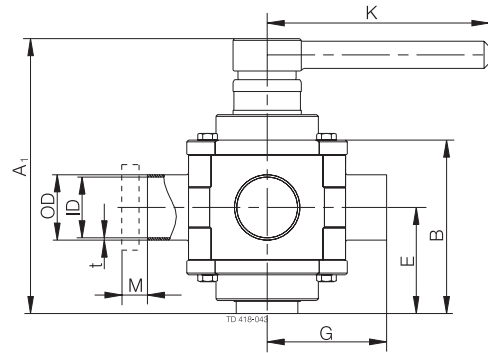


Size 4": Double acting actuator

Dimensions

AH valves:

Size	1"	1.5"	2"	2.5"	3"	4"
A ₁	4.57	5.87	6.34	7.05	8.03	11.50
B	2.56	3.54	4.02	4.65	5.39	7.68
OD	1.00	1.51	2.06	2.53	3.00	4.00
ID	0.89	1.40	1.91	2.37	2.83	3.82
t	0.06	0.05	0.07	0.08	0.08	0.09
E	1.65	2.20	2.44	2.76	3.15	4.61
G	2.17	2.76	3.23	4.13	4.33	6.10
G ₁ (Clamp)	4.75	5.83	6.82	8.27	9.46	13.08
K	5.12	5.12	7.09	7.09	9.25	12.99
Weight (lbs.)	4.00	7.30	10.60	15.20	25.15	55.15

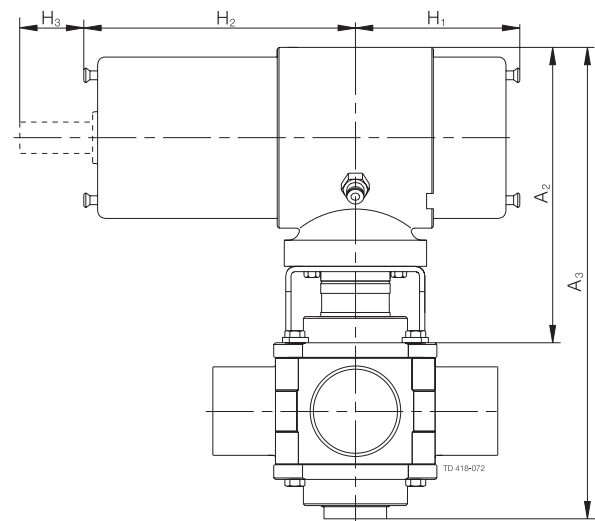


a. MH53 with handle.

Fig. 3. Dimensions.

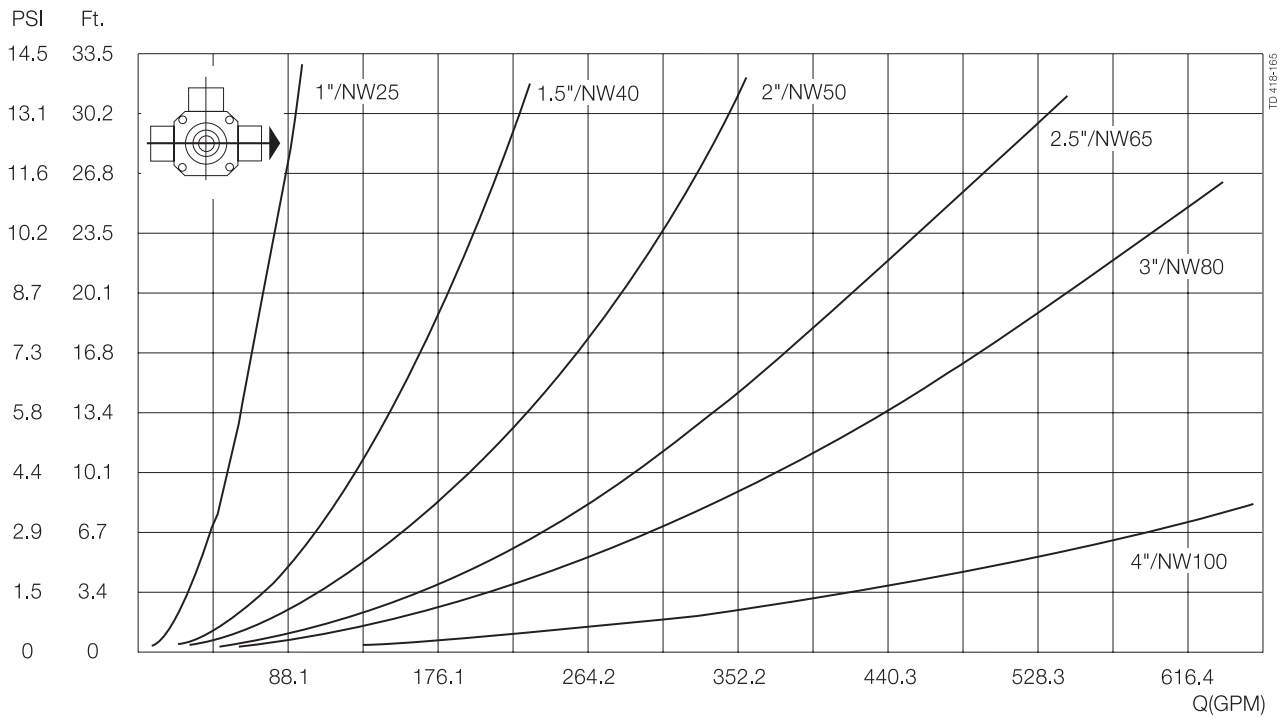
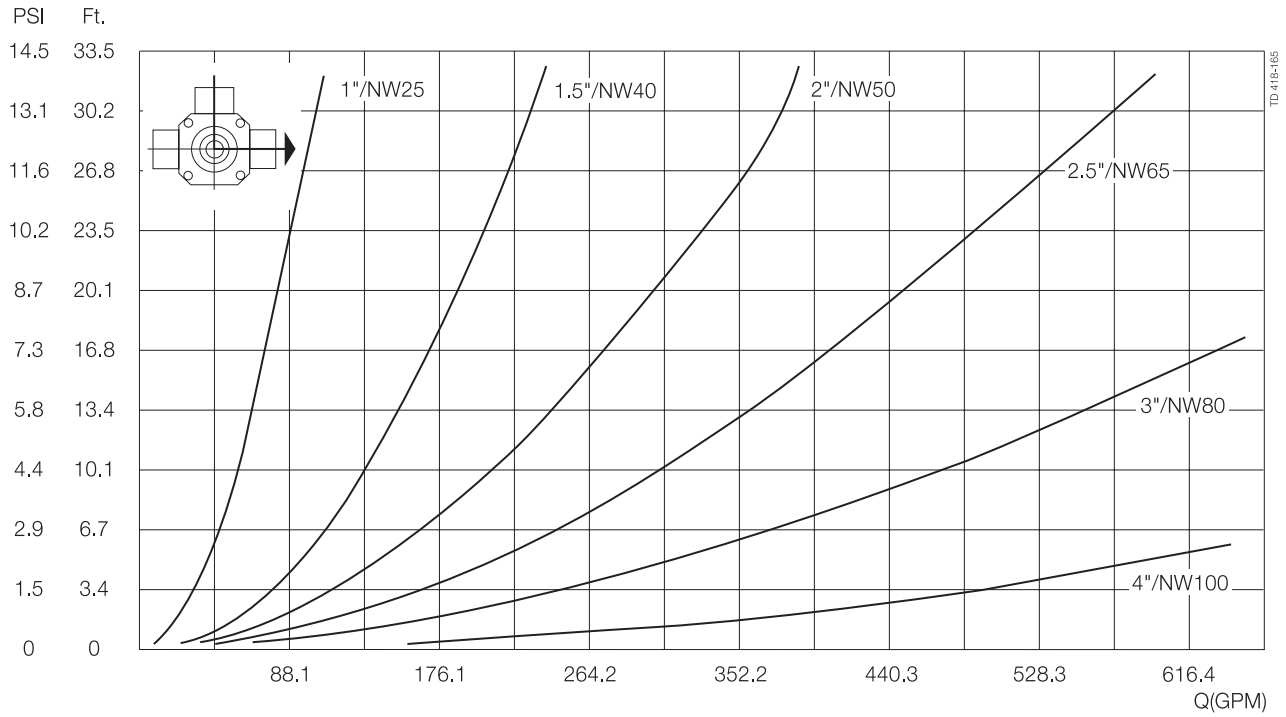
Actuators

Size	1"	1.5"	2"	2.5"	3"	4"
A ₁	6.69	6.69	6.69	6.77	7.01	7.64
A ₂	9.17	10.24	10.75	11.42	12.40	15.31
H ₁ 630	2.24	2.24	2.24	11.22	11.22	-
H ₁ 631	2.24	2.24	2.24	2.24	2.24	4.69
H ₁ 632	3.74	3.74	3.74	3.74	3.74	7.64
H ₁ 633	3.74	3.74	3.74	3.74	3.74	11.06
H ₂ 630	12.83	12.83	12.83	11.22	11.22	-
H ₂ 631	4.69	4.69	4.69	4.69	4.69	4.69
H ₂ 632	6.18	6.18	6.18	6.18	6.18	7.64
H ₂ 633	9.57	9.57	9.57	9.57	9.57	11.06
H ₃	1.69	1.69	4.69	1.69	1.69	1.69



b. MH53 with actuator, type KH631.

Pressure drop/capacity diagrams



Note! For the diagram the following applies:
 Medium: Water(68°F).
 Measurement: In accordance with VDI 2173.

Caution, opening/closing time:

Opening/closing time will be affected by the following:

- The air supply (air pressure).
- The length and dimensions of the air hoses.
- Number of valves connected to the same air hose.
- Use of single solenoid valve for serial connected air actuator functions.
- Product pressure.

Air Connections

Compressed air:

R 1/8" (BSP), internal thread.

Materials

Product wetted steel parts:Acid-resistant steel AISI 316L
Finish:Semi-bright (Ra = 0.8 µm)
SealsShutter in PTFE.
SealsIn valve: EPDM rubber
.In actuator: Nitrile (NBR)

Options

Equipment

- Male parts or clamp liners in accordance with required standard.
- ThinkTop® (excludes 633 actuators)
- Bottom lid for hot water or steam heating.
- Bottom fitted indication unit.
- Limit stop for manual valve.
- Pilot valve, T (for actuator type 633)
- Rebuilding to double acting valve, if high viscosity product or quick operation

Ordering

Please state the following when ordering:

- Koltek valve; manually or air-operated
- Size.
- Number of ports; 2 or 3.
- Connections, if not welding ends.
- Type of actuator (if applicable).
- Options.

The valve is authorized to carry the 3A symbol.

Material grades

- Product wetted seals of Nitrile (NBR) or Fluorinated rubber (FPM).
- Shutter in reinforced PTFE (max. 266oF together with seals in EPDM or FPM)

(Material for the reinforced shutter is not compliant with the regulation of the U.S. Food and Drug administration (FDA) as published in the code of federal regulations, title 21, paragraph 177.2600.)