

Stainless steel construction machined from solid bar stock with all surfaces machined & polished to 32Ra or Better.

The design of valve is self draining hence no retention of product or CIP in the valve.

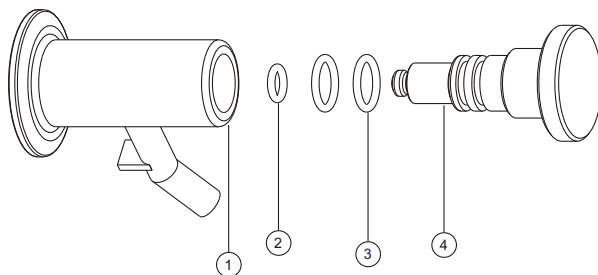
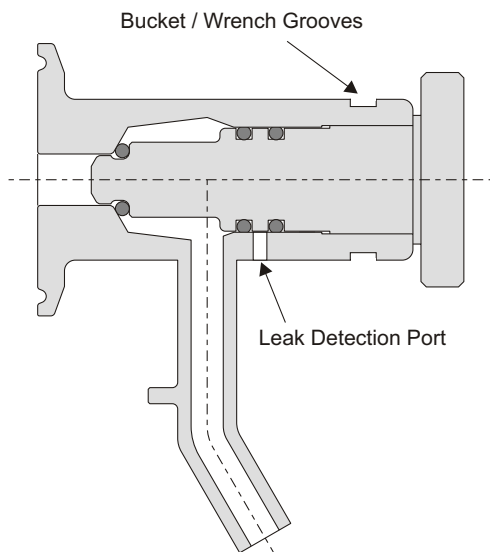
Quick disassembly for inspection and cleaning.

Vessel connection 1/2" MNPT, 3/8" MNPT, or 1" sanitary clamp.

Optional : SIP steam or water flush connection

Maximum product pressure : 147 PSI maximum (10 Bars)  
Test pressure 175 PSI

Maximum temperature : 450° F (230° C)



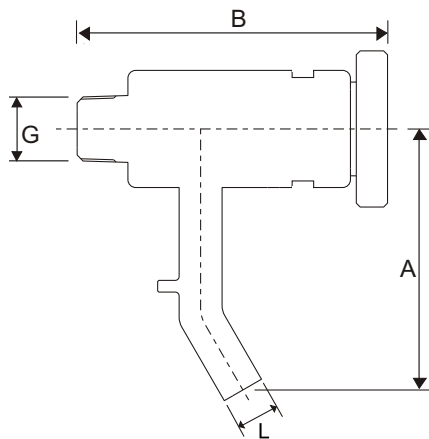
Exploded view of standard Sampling Valve

NO.	PART NO.	DESCRIPTION	MATERIAL
1	3401	BODY	AISI 316L / AISI 304
2	3402	SEAT	PTFE
3	3403	O'RING	SILICONE
4	3404	PLUNGER	AISI 316L / AISI 304

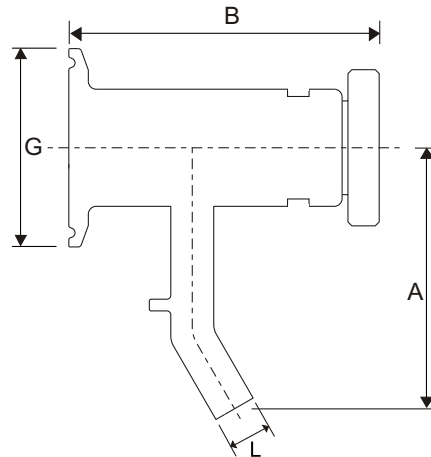
# Sampling Valve

## 34 Series

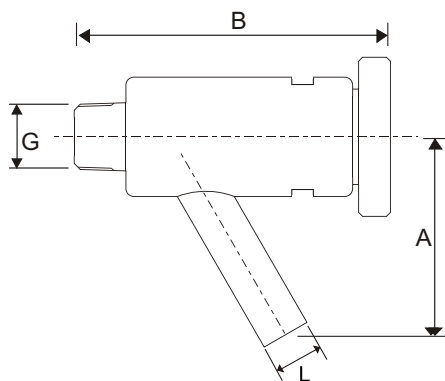
### Dimensions (Inches)



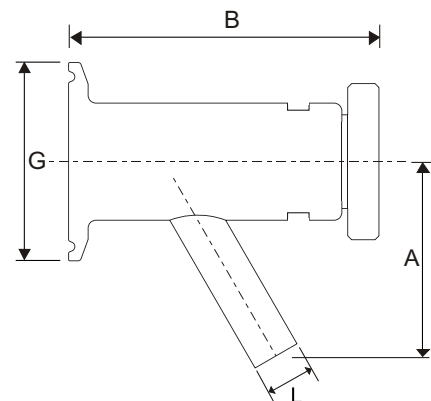
A	B	G	L
2 5/8"	3 1/8"	1/2" NPT	1/4" ID x 13/32" OD



A	B	G	L
2 5/8"	3 1/8"	1" TC	1/4" ID x 13/32" OD

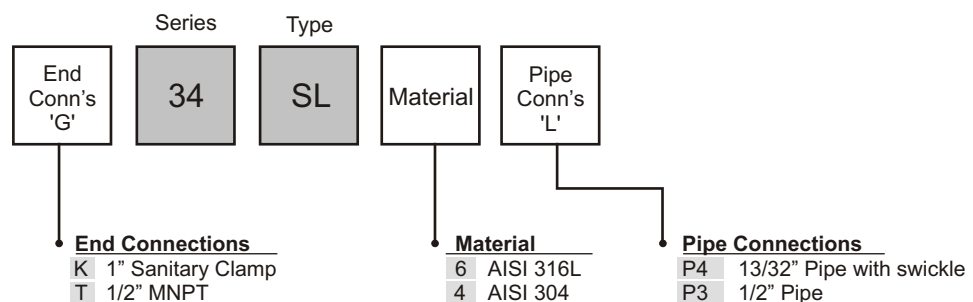


A	B	G	L
2"	3 1/8"	1/2" NPT	3/8" ID x 1/2" OD



A	B	G	L
2"	3 1/8"	1" TC	3/8" ID x 1/2" OD

### 34 Series Sampling Valve Ordering System



30271 Tomas Street • Rancho Santa Margarita, CA 92688 • Tel. 949/589-3978 • Fax 949/589-3979  
 Email : cipriani@ciprianicorp.com • Website : <http://www.ciprianicorp.com/>